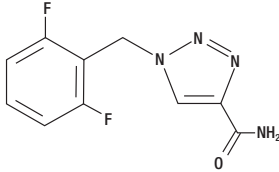


## DESCRIPTION

BANZEL (rufinamide) is a triazole derivative structurally unrelated to currently marketed antiepileptic drugs (AEDs). Rufinamide has the chemical name 1-[(2,6-difluorophenyl)methyl]-1*H*-1,2,3-triazole-4-carboxamide. It has an empirical formula of C<sub>10</sub>H<sub>8</sub>F<sub>2</sub>N<sub>4</sub>O and a molecular weight of 238.2. The drug substance is a white, crystalline, odorless and slightly bitter tasting neutral powder. Rufinamide is practically insoluble in water, slightly soluble in tetrahydrofuran and in methanol, and very slightly soluble in ethanol and in acetonitrile.



BANZEL is available for oral administration in film-coated tablets, scored on both sides, containing 200 and 400 mg of rufinamide. Inactive ingredients are colloidal silicon dioxide, corn starch crosscarmellose sodium, hypromellose, lactose monohydrate, magnesium stearate, microcrystalline cellulose, and sodium lauryl sulphate. The film coating contains hypromellose, iron oxide red, polyethylene glycol, talc, and titanium dioxide.

## CLINICAL PHARMACOLOGY

### Mechanism of Action

The precise mechanism(s) by which rufinamide exerts its antiepileptic effect is unknown. The results of in vitro studies suggest that the principal mechanism of action of rufinamide is modulation of the activity of sodium channels and, in particular, prolongation of the inactive state of the channel. Rufinamide ( $\geq 1 \mu\text{M}$ ) significantly slowed sodium channel recovery from inactivation after a prolonged prepulse in cultured cortical neurons, and limited sustained repetitive firing of sodium-dependent action potentials (EC<sub>50</sub> of 3.8  $\mu\text{M}$ ).

## PHARMACOKINETICS

### Overview

BANZEL is well absorbed after oral administration. However, the rate of absorption is relatively slow and the extent of absorption is decreased as dose is increased. The pharmacokinetics does not change with multiple dosing. Most elimination of rufinamide is via metabolism, with the primary metabolite resulting from enzymatic hydrolysis of the carboxamide moiety to form the carboxylic acid. This metabolic route is not cytochrome P450 dependent. There are no known active metabolites. Plasma half-life of rufinamide is approximately 6–10 hours.

### Absorption and Distribution

Following oral administration of BANZEL, peak plasma concentrations occur between 4 and 6 hours (T<sub>max</sub>) both under fed and fasted conditions. BANZEL tablets display decreasing bioavailability with increasing dose after single and multiple dose administration. Based on urinary excretion, the extent of absorption was at least 85% following oral administration of a single dose of 600 mg rufinamide under fed conditions.

Multiple dose pharmacokinetics can be predicted from single dose data for both rufinamide and its metabolite. Given the dosing frequency of every 12 hours and the half-life of 6 to 10 hours, the observed steady-state peak concentration of about two to three times the peak concentration after a single dose is expected.

Food increased the extent of absorption of rufinamide in healthy volunteers by 34% and increased peak exposure by 56% after a single dose of 400 mg, although the T<sub>max</sub> was not elevated. Clinical trials were performed under fed conditions and dosing is recommended with food (see DOSAGE AND ADMINISTRATION).

Only a small fraction of rufinamide (34%) is bound to human serum proteins, predominantly to albumin (27%), giving little risk of displacement drug-drug interactions. Rufinamide was evenly distributed between erythrocytes and plasma. The apparent volume of distribution is dependent upon dose and varies with body surface area. The apparent volume of distribution was about 50 L at 3200 mg/day.

### Metabolism

Rufinamide is extensively metabolized but has no active metabolites. Following a radiolabeled dose of rufinamide, less than 2% of the dose was recovered unchanged in urine. The primary biotransformation pathway is carboxylesterase(s) mediated hydrolysis of the carboxylamide group to the acid derivative CGP 47292. A few minor additional metabolites were detected in urine, which appeared to be acyl-glucuronides of CGP 47292. There is no involvement of oxidizing cytochrome P450 enzymes or glutathione in the biotransformation process.

Rufinamide is a weak inhibitor of CYP 2E1. It did not show significant inhibition of other CYP enzymes. Rufinamide is a weak inducer of CYP 3A4 enzymes.

### Elimination/Excretion

Renal excretion is the predominant route of elimination for drug related material, accounting for 85% of the dose based on a radiolabeled study. Of the metabolites identified in urine, at least 66% of the rufinamide dose was excreted as the acid metabolite CGP 47292, with 2% of the dose excreted as rufinamide.

The plasma elimination half-life is approximately 6–10 hours in healthy subjects and patients with epilepsy.

### Special Populations

Gender: Population pharmacokinetic analyses of females show a 6–14% lower apparent clearance of rufinamide compared to males. This effect is not clinically important.

Race: In a population pharmacokinetic analysis of clinical studies, no difference in clearance or volume of distribution of rufinamide was observed between the black and Caucasian subjects, after controlling for body size. Information on other races could not be obtained because of smaller numbers of these subjects.

Pediatrics: Based on a population analysis in 117 children (age 4–11 years) and 99 adolescents (age 12–17 years), the pharmacokinetics of rufinamide in these patients is similar to the pharmacokinetics in adults.

Elderly: The results of a study evaluating single-dose (400 mg) and multiple dose (800 mg/day for 6 days) pharmacokinetics of rufinamide in 8 healthy elderly subjects (65–80 years old) and 7 younger healthy subjects (18–45 years old) found no significant age-related differences in the pharmacokinetics of rufinamide.

Renal Impairment: Rufinamide pharmacokinetics in 9 patients with severe renal impairment (creatinine clearance <30 mL/min) was similar to that of healthy subjects. Patients undergoing dialysis 3 hours post rufinamide dosing showed a reduction in AUC and C<sub>max</sub> by 29% and 16% respectively. Adjusting rufinamide dose for the loss of drug upon dialysis should be considered.

Hepatic Impairment: There have been no specific studies investigating the effect of hepatic impairment on the pharmacokinetics of rufinamide. Therefore, use in patients with severe hepatic impairment is not recommended. Caution should be exercised in treating patients with mild to moderate hepatic impairment.

## Drug Interactions

Based on in vitro studies, rufinamide shows little or no inhibition of most cytochrome P450 enzymes at clinically relevant concentrations, with weak inhibition of CYP 2E1. Drugs that are substrates of CYP 2E1 (e.g. chlorzoxazone) may have increased plasma levels in the presence of rufinamide, but this has not been studied.

Based on in vivo drug interaction studies with triazolam and oral contraceptives, rufinamide is a weak inducer of the CYP 3A4 enzyme and can decrease exposure of drugs that are substrates of CYP 3A4 (see Effects of BANZEL on other medications).

Rufinamide is metabolized by carboxylesterases. Drugs that may induce the activity of carboxylesterases may increase the clearance of rufinamide. Broad-spectrum inducers such as carbamazepine and phenobarbital may have minor effects on rufinamide metabolism via this mechanism. Drugs that are inhibitors of carboxylesterases may decrease metabolism of rufinamide.

## Antiepileptic Drugs

### Effects of BANZEL on other AEDs

Population pharmacokinetic analysis of average concentration at steady state of carbamazepine, lamotrigine, phenobarbital, phenytoin, topiramate, and valproate showed that typical rufinamide C<sub>avg,ss</sub> levels had little effect on the pharmacokinetics of other AEDs. Any effects, when they occur, have been more marked in the pediatric population.

Table 1 summarizes the drug-drug interactions of BANZEL with other AEDs.

Table 1: Summary of drug-drug interactions of BANZEL with other anti-epileptic drugs		
AED Co-administered	Influence of Rufinamide on AED concentration <sup>a)</sup>	Influence of AED on Rufinamide concentration
Carbamazepine	Decrease by 7 to 13% <sup>b)</sup>	Decrease by 19 to 26% Dependent on dose of carbamazepine
Lamotrigine	Decrease by 7 to 13% <sup>b)</sup>	No Effect
Phenobarbital	Increase by 8 to 13% <sup>b)</sup>	Decrease by 25 to 46% <sup>c),d)</sup> Independent of dose or concentration of phenobarbital
Phenytoin	Increase by 7 to 21% <sup>b)</sup>	Decrease by 25 to 46% <sup>c),d)</sup> Independent of dose or concentration of phenytoin
Topiramate	No Effect	No Effect
Valproate	No Effect	Increase by <16 to 70% <sup>e)</sup> Dependent on concentration of valproate
Primidone	Not Investigated	Decrease by 25 to 46% <sup>c),d)</sup> Independent of dose or concentration of primidone
Benzodiazepines <sup>a)</sup>	Not Investigated	No Effect

- Predictions are based on BANZEL concentrations at the maximum recommended dose of BANZEL.
- Maximum changes predicted to be in children and in patients who achieve significantly higher levels of BANZEL, as the effect of rufinamide on these AEDs is concentration-dependent.
- Larger effects in children at high doses/concentrations of AEDs.
- Phenobarbital, primidone and phenytoin were treated as a single covariate (phenobarbital-type inducers) to examine the effect of these agents on BANZEL clearance.
- All compounds of the benzodiazepine class were pooled to examine for 'class effect' on BANZEL clearance.

Phenytoin: The decrease in clearance of phenytoin estimated at typical levels of rufinamide (C<sub>avg,ss</sub> 15  $\mu\text{g/mL}$ ) is predicted to increase plasma levels of phenytoin by 7 to 21%. As phenytoin is known to have non-linear pharmacokinetics (clearance becomes saturated at higher doses), it is possible that exposure will be greater than the model prediction.

### Effects of Other AEDs on BANZEL

Potent cytochrome P450 enzyme inducers, such as carbamazepine, phenytoin, primidone, and phenobarbital appear to increase the clearance of BANZEL (see Table 1). Given that the majority of clearance of BANZEL is via a non-CYP-dependent route, the observed decreases in blood levels seen with carbamazepine phenytoin, phenobarbital, and primidone are unlikely to be entirely attributable to induction of a P450 enzyme. Other factors explaining this interaction are not understood.

Any effects, where they occurred were likely to be more marked in the pediatric population.

Valproate: Based on a population pharmacokinetic analysis, rufinamide clearance was decreased by valproate. In children, valproate administration may lead to elevated levels of rufinamide by up to 70%. Patients stabilized on BANZEL before being prescribed valproate should begin valproate therapy at a low dose, and titrate to a clinically effective dose. Similarly, patients on valproate should begin at a BANZEL dose lower than 400 mg.

### Effects of BANZEL on other Medications

Hormonal contraceptives: Co-administration of BANZEL (800 mg BID for 14 days) and Ortho-Novum 1/35<sup>®</sup> resulted in a mean decrease in the ethinyl estradiol AUC<sub>0-24</sub> of 22% and C<sub>max</sub> by 18% and norethindrone AUC<sub>0-24</sub> by 14% and C<sub>max</sub> by 18%, respectively. The clinical significance of this decrease is unknown. Female patients of childbearing age should be warned that the concurrent use of BANZEL with hormonal contraceptives may render this method of contraception less effective. Additional non-hormonal forms of contraception are recommended when using BANZEL (see Information for Patients).

Triazolam: Co-administration and pre-treatment with BANZEL (400 mg bid) resulted in a 37% decrease in AUC and a 23% decrease in C<sub>max</sub> of triazolam, a CYP 3A4 substrate.

Olanzapine: Co-administration and pre-treatment with BANZEL (400mg bid) resulted in no change in AUC and C<sub>max</sub> of olanzapine, a CYP 1A2 substrate.

## CLINICAL STUDIES

The effectiveness of BANZEL as adjunctive treatment for the seizures associated with Lennox-Gastaut syndrome (LGS) was established in a single multicenter, double-blind, placebo-controlled, randomized, parallel-group study (n=138). Male and female patients (between 4 and 30 years of age) were included if they had a diagnosis

## BANZEL™ (rufinamide)

of inadequately controlled seizures associated with LGS (including both atypical absence seizures and drop attacks) and were being treated with 1 to 3 concomitant stable dose AEDs. Each patient must have had at least 90 seizures in the month prior to study entry. After completing a 4 week Baseline Phase on stable therapy, patients were randomized to have BANZEL or placebo added to their ongoing therapy during the 12 week Double-blind Phase. The Double-blind Phase consisted of 2 periods: the Titration Period (1 to 2 weeks) and the Maintenance Period (10 weeks). During the Titration Period, the dose was increased to a target dosage of approximately 45 mg/kg/day (3200 mg in adults of  $\geq 70$ kg), given on a b.i.d. schedule. Dosage reductions were permitted during titration if problems in tolerability were encountered. Final doses at titration were to remain stable during the maintenance period. Target dosage was achieved in 88% of the BANZEL-treated patients. The majority of these patients reached the target dose within 7 days, with the remaining patients achieving the target dose within 14 days.

The primary efficacy variables were:

- The percent change in total seizure frequency per 28 days;
- The percent change in tonic-atonic (drop attacks) seizure frequency per 28 days;
- Seizure severity from the Parent/Guardian Global Evaluation of the patient's condition. This was a 7-point assessment performed at the end of the Double-blind Phase. A score of +3 indicated that the patient's seizure severity was very much improved, a score of 0 that the seizure severity was unchanged, and a score of -3 that the seizure severity was very much worse.

The results of the three primary endpoints are shown in Table 2 below.

Table 2: Lennox-Gastaut Syndrome Trial Seizure Frequency Primary Efficacy Variable Results		
Variable	Placebo	Rufinamide
Median percent change in total seizure frequency per 28 days	-11.7	-32.7 ( $p=0.0015$ )
Median percent change in tonic-atonic seizure frequency per 28 days	1.4	-42.5 ( $p<0.0001$ )
Improvement in Seizure Severity Rating from Global Evaluation	30.6	53.4 ( $p=0.0041$ )

### INDICATIONS AND USAGE

BANZEL (rufinamide) is indicated for adjunctive treatment of seizures associated with Lennox-Gastaut syndrome in children 4 years and older and adults.

### CONTRAINDICATIONS

BANZEL is contraindicated in patients with Familial Short QT syndrome (See PRECAUTIONS, QT Shortening).

### WARNINGS

#### Suicidal Behavior and Ideation

Antiepileptic drugs increase the risk of suicidal thoughts or behavior in patients taking these drugs for any indication. Patients treated with any antiepileptic drug for any indication should be monitored for the emergence or worsening of depression, suicidal thoughts or behavior, or any unusual changes in mood or behavior.

Pooled analyses of 199 placebo-controlled clinical trials (mono- and adjunctive therapy) of 11 different antiepileptic drugs showed that patients randomized to one of the antiepileptic drugs had approximately twice the risk (adjusted Relative Risk 1.8, 95% CI:1.2, 2.7) of suicidal thinking or behavior compared to patients randomized to placebo. In these trials, which had a median treatment duration of 12 weeks, the estimated incidence rate of suicidal behavior or ideation among 27,863 antiepileptic drug-treated patients was 0.43%, compared to 0.24% among 16,029 placebo-treated patients, representing an increase of approximately one case of suicidal thinking or behavior for every 530 patients treated. There were four suicides in drug-treated patients in the trials and none in placebo-treated patients, but the number of events is too small to allow any conclusion about drug effect on suicide.

The increased risk of suicidal thoughts or behavior was observed as early as one week after starting drug treatment and persisted for at least 24 weeks. Because most trials included in the analysis did not extend beyond 24 weeks, the risk of suicidal thoughts or behavior beyond 24 weeks could not be assessed.

The risk of suicidal thoughts or behavior was generally consistent among drugs in the data analyzed. The finding of increased risk with antiepileptic drugs of varying mechanisms of action and across a range of indications suggests that the risk applies to all antiepileptic drugs used for any indication. The risk did not vary substantially by age in the clinical trials analyzed.

The following table (Table 3) shows absolute and relative risk of suicidal behavior and ideation by indication.

Table 3: Absolute and Relative Risk of Suicidal Behavior and Ideation				
Indication	Placebo Patients with Events Per 1000 Patients	Drug Patients with Events Per 1000 Patients	Relative Risk: Incidence of Events in Drug Patients/ Incidence in Placebo Patients	Risk Difference: Additional Drug Patients with Events Per 1000 Patients
Epilepsy	1.0	3.4	3.5	2.4
Psychiatric	5.7	8.5	1.5	2.9
Other	1.0	1.8	1.9	0.9
Total	2.4	4.3	1.8	1.9

The relative risk for suicidal thoughts or behavior was higher in clinical trials for epilepsy than in clinical trials for psychiatric or other conditions, but the absolute risk differences were similar.

Anyone considering prescribing BANZEL or any other antiepileptic drug must balance this risk with the risk of untreated illness. Epilepsy and many other illnesses for which antiepileptics are prescribed are themselves associated with morbidity and mortality and an increased risk of suicidal thoughts and behavior. Should suicidal thoughts and behavior emerge during treatment, the prescriber needs to consider whether the emergence of these symptoms in any given patient may be related to the illness being treated.

Patients, their caregivers, and families should be informed that antiepileptic drugs increase the risk of suicidal thoughts and behavior and should be advised of the need to be alert for the emergence or worsening of the signs and symptoms of depression, any unusual changes in mood or behavior, or the emergence of suicidal thoughts, behavior, or thoughts about self-harm. Behaviors of concern should be reported immediately to healthcare providers.

## BANZEL™ (rufinamide)

### Central Nervous System Reactions:

Use of BANZEL has been associated with central nervous system-related adverse reactions. The most significant of these can be classified into two general categories:

- 1) somnolence or fatigue, and 2) coordination abnormalities, dizziness, gait disturbances, and ataxia (see ADVERSE REACTIONS).

### PRECAUTIONS

#### QT Shortening

Formal cardiac ECG studies demonstrated shortening of the QT interval (up to 20 msec) with BANZEL treatment. In a placebo-controlled study of the QT interval, a higher percentage of BANZEL-treated subjects (46% at 2400 mg, 46% at 3200 mg, and 65% at 4800 mg) had a QT shortening of greater than 20 msec at  $T_{max}$  compared to placebo (5 – 10%).

Reductions of the QT interval below 300 msec were not observed in the formal QT studies with doses up to 7200 mg/day. Moreover, there was no signal for drug-induced sudden death or ventricular arrhythmias.

The degree of QT shortening induced by BANZEL is without any known clinical risk. Familial Short QT syndrome is associated with an increased risk of sudden death and ventricular arrhythmias, particularly ventricular fibrillation. Such events in this syndrome are believed to occur primarily when the corrected QT interval falls below 300 msec. Nonclinical data also indicate that QT shortening is associated with ventricular fibrillation.

Patients with Familial Short QT syndrome should not be treated with BANZEL (see CONTRAINDICATIONS). Caution should be used when administering BANZEL with other drugs that shorten the QT interval.

#### Multi-organ Hypersensitivity Reactions

Multi-organ hypersensitivity syndrome, a serious condition sometimes induced by antiepileptic drugs, has occurred in association with BANZEL therapy in clinical trials. One patient experienced rash, urticaria, facial edema, fever, elevated eosinophils, stuporous state, and severe hepatitis, beginning on day 29 of BANZEL therapy and extending over a course of 30 days of continued BANZEL therapy with resolution 11 days after discontinuation. Additional possible cases presented with rash and one or more of the following: fever, elevated liver function studies, hematuria, and lymphadenopathy. These cases occurred in children less than 12 years of age, within four weeks of treatment initiation, and were noted to resolve and/or improve upon BANZEL discontinuation. This syndrome has been reported with other anticonvulsants and typically, although not exclusively, presents with fever and rash associated with other organ system involvement. Because this disorder is variable in its expression, other organ system signs and symptoms not noted here may occur. If this reaction is suspected, BANZEL should be discontinued and alternative treatment started.

All patients who develop a rash while taking BANZEL must be closely supervised.

#### Withdrawal of AEDs

As with all antiepileptic drugs BANZEL should be withdrawn gradually to minimize the risk of precipitating seizures, seizure exacerbation, or status epilepticus. If abrupt discontinuation of the drug is medically necessary, the transition to another AED should be made under close medical supervision. In clinical trials BANZEL discontinuation was achieved by reducing the dose by approximately 25% every two days.

#### Status Epilepticus

Estimates of the incidence of treatment emergent status epilepticus among patients treated with BANZEL are difficult because standard definitions were not employed. In a controlled Lennox Gastaut syndrome trial, 3 of 74 (4.1%) BANZEL-treated patients had episodes that could be described as status epilepticus in the BANZEL-treated patients compared with none of the 64 patients in the placebo-treated patients. In all controlled trials that included patients with different epilepsies, 11 of 1240 (0.9%) BANZEL-treated patients had episodes that could be described as status epilepticus compared with none of 635 patients in the placebo-treated patients.

#### Information for Patients

Prescribers or other health professionals should inform patients, their families, and their caregivers about the benefits and risks associated with treatment with BANZEL and should counsel them in its appropriate use. A patient Medication Guide is available for BANZEL. The prescriber or healthcare professional should instruct patients, their families, and their caregivers to read the Medication Guide and should assist them in understanding its contents. Patients should be given the opportunity to discuss the contents of the Medication Guide and to obtain answers to any questions they may have. The complete text of the Medication Guide is reprinted at the end of this document.

Patients should be advised of the following issues and asked to alert their prescriber if these occur while taking BANZEL.

Suicidal Thinking and Behavior – Patients, their caregivers, and families should be informed that antiepileptic drugs increase the risk of suicidal thoughts and behavior and should be advised of the need to be alert for the emergence or worsening of the signs and symptoms of depression, any unusual changes in mood or behavior, or the emergence of suicidal thoughts, behavior, or thoughts about self-harm. Behaviors of concern should be reported immediately to healthcare providers.

Patients should be instructed to take BANZEL only as prescribed.

BANZEL should be taken with food.

As with all centrally acting medications, alcohol in combination with BANZEL may cause additive central nervous system effects.

Patients should be advised about the potential for somnolence or dizziness and advised not to drive or operate machinery until they have gained sufficient experience on BANZEL to gauge whether it adversely affects their mental and/or motor performance.

Female patients of childbearing age should be warned that the concurrent use of BANZEL with hormonal contraceptives may render this method of contraception less effective (see Drug Interactions). Additional non-hormonal forms of contraception are recommended when using BANZEL.

Patients should be advised to notify their physician if they become pregnant or intend to become pregnant during therapy. Patients should be advised to notify their physician if they are breast-feeding or intend to breast-feed. Patients should be advised to notify their physician if they experience a rash associated with fever.

#### Laboratory Tests

Leucopenia (white cell count  $< 3 \times 10^9$  L) was more commonly observed in BANZEL-treated patients (43 of 1171, 3.7%) than placebo-treated patients (7 of 579, 1.2%) in all controlled trials.

#### Drug Interactions

In vitro and in vivo studies have shown that BANZEL is unlikely to be involved in significant pharmacokinetic interactions.

BANZEL can increase plasma concentrations of phenytoin by 21% or more due to non-linear pharmacokinetics. Valproate can increase BANZEL concentrations up to 70%. Patients stabilized on BANZEL before being prescribed valproate should begin valproate therapy at a low dose, and titrate to a clinically effective dose. Similarly, patients on valproate should begin at a BANZEL dose lower than 400 mg.

Coadministration of BANZEL with ethinyl estradiol and norethindrone can decrease  $AUC_{0-24}$  of these hormonal contraceptives by 22% and 14% and  $C_{max}$  by 31% and 18%, respectively. Female patients of childbearing age should be warned that the concurrent use of BANZEL with hormonal contraceptives may render this method of contraception less effective. Additional non-hormonal forms of contraception are recommended when using BANZEL (see CLINICAL PHARMACOLOGY and Information for Patients).

**Drug/Laboratory Test Interactions**

There are no known interactions of BANZEL with commonly used laboratory tests.

**Carcinogenicity, Mutagenicity, Impairment of Fertility**

**Carcinogenicity:** Rufinamide was given in the diet to mice at 40, 120, and 400 mg/kg/day and to rats at 20, 60, and 200 mg/kg/day for two years. The doses in mice were associated with plasma AUCs 0.1 to 1 times the human plasma AUC at the maximum recommended human dose (MRHD, 3200 mg/day). Increased incidences of tumors (benign bone tumors (osteomas) and/or hepatocellular adenomas and carcinomas) were observed in mice at all doses. Increased incidences of thyroid follicular adenomas were observed in rats at all but the low dose; the low dose is <0.1 times the MRHD on a mg/m<sup>2</sup> basis.

**Mutagenicity:** Rufinamide was not mutagenic in the in vitro bacterial reverse mutation (Ames) assay or the in vitro mammalian cell point mutation assay. Rufinamide was not clastogenic in the in vitro mammalian cell chromosomal aberration assay or the in vivo rat bone marrow micronucleus assay.

**Impairment of Fertility:** Oral administration of rufinamide (doses of 20, 60, 200, and 600 mg/kg/day) to male and female rats prior to mating and throughout mating, and continuing in females up to day 6 of gestation resulted in impairment of fertility (decreased conception rates and mating and fertility indices; decreased numbers of corpora lutea, implantations, and live embryos; increased preimplantation loss; decreased sperm count and motility) at all doses tested. Therefore, a no-effect dose was not established. The lowest dose tested was associated with a plasma AUC ≈ 0.2 times the human plasma AUC at the MRHD.

**PREGNANCY**

**Pregnancy Category C**

Rufinamide produced developmental toxicity when administered orally to pregnant animals at clinically relevant doses.

Rufinamide was administered orally to rats at doses of 20, 100, and 300 mg/kg/day and to rabbits at doses of 30, 200, and 1000 mg/kg/day during the period of organogenesis (implantation to closure of the hard palate); the high doses are associated with plasma AUCs ≈2 times the human plasma AUC at the maximum recommended human dose (MRHD, 3200 mg/day). Decreased fetal weights and increased incidences of fetal skeletal abnormalities were observed in rats at doses associated with maternal toxicity. In rabbits, embryo-fetal death, decreased fetal body weights, and increased incidences of fetal visceral and skeletal abnormalities occurred at all but the low dose. The highest dose tested in rabbits was associated with abortion. The no-effect doses for adverse effects on rat and rabbit embryo-fetal development (20 and 30 mg/kg/day, respectively) were associated with plasma AUCs ≈ 0.2 times that in humans at the MRHD.

In a rat pre- and post-natal development study (dosing from implantation through weaning) conducted at oral doses of 5, 30, and 150 mg/kg/day (associated with plasma AUCs up to ≈1.5 times that in humans at the MRHD), decreased offspring growth and survival were observed at all doses tested. A no-effect dose for adverse effects on pre- and post-natal development was not established. The lowest dose tested was associated with plasma AUC < 0.1 times that in humans at the MRHD.

There are no adequate and well-controlled studies in pregnant women. BANZEL should be used during pregnancy only if the potential benefit justifies the potential risk to the fetus.

**Labor and Delivery**

The effect of BANZEL on labor and delivery in humans is not known.

**Nursing Mothers**

Rufinamide is likely to be excreted in breast milk. Because of the potential for serious adverse reactions in nursing infants from BANZEL, a decision should be made whether to discontinue nursing or discontinue the drug taking into account the importance of the drug to the mother.

**Pediatric Use**

The safety and effectiveness in patients with Lennox-Gastaut syndrome have not been established in children less than 4 years.

**Geriatric Use**

Clinical studies of BANZEL did not include sufficient numbers of subjects aged 65 and over to determine whether they respond differently from younger subjects. In general, dose selection for an elderly patient should be cautious, usually starting at the low end of the dosing range, reflecting the greater frequency of decreased hepatic, renal, or cardiac function, and of concomitant disease or other drug therapy.

A study evaluating the pharmacokinetics of rufinamide in elderly subjects showed that there were no significant differences in the plasma and urine pharmacokinetic parameters of rufinamide between the younger and elderly subjects under both single and multiple dose treatments (see Special Populations: Elderly).

**Adverse Reactions**

Placebo-controlled double-blind studies were performed in adults and in pediatric patients, down to age of 4, in other forms of epilepsy, in addition to the trial in Lennox-Gastaut syndrome. Data on CNS Reactions (see WARNINGS) from the Lennox-Gastaut study are presented first. Because there is no reason to suspect that adverse reactions would substantially differ between these patient populations, safety data from all of these controlled studies are then presented. Most of these adverse reactions were mild to moderate and transient in nature.

*Common central nervous system reactions in the controlled trial of patients 4 years or older with Lennox-Gastaut syndrome treated with BANZEL as adjunctive therapy (see WARNINGS):*

Somnolence was reported in 24.3% of BANZEL-treated patients compared to 12.5% of placebo patients and led to study discontinuation in 2.7% of treated patients compared to 0% of placebo patients. Fatigue was reported in 9.5% of BANZEL-treated patients compared to 7.8% of placebo patients. It led to study discontinuation in 1.4% of treated patients and 0% of placebo patients.

Dizziness was reported in 2.7% of BANZEL-treated patients compared to 0% of placebo patients, and did not lead to study discontinuation.

Ataxia and gait disturbance were reported in 5.4% and 1.4% of BANZEL-treated patients, respectively, and in no placebo patients. Balance disorder and abnormal coordination were each reported in 0% of BANZEL-treated patients and 1.6% of placebo patients. None of these reactions led to study discontinuation.

*All Adverse Reactions for All Treated Patients with Epilepsy, Double-blind Adjunctive Therapy Studies:* The most commonly observed (≥10%) adverse reactions in BANZEL-treated patients, when used as adjunctive therapy at all doses studied (200 to 3200 mg/day) with a higher frequency than in placebo were: headache, dizziness, fatigue, somnolence, and nausea.

At the target dose of 45 mg/kg/day in children, the most commonly observed (≥5%) adverse reactions in BANZEL-treated patients, given as adjunctive therapy, with a higher frequency than placebo were: somnolence, vomiting, headache, fatigue, dizziness, nausea, and convulsion.

At doses up to 3200 mg/day in adults, the most commonly observed (≥5%) adverse reactions in BANZEL-treated patients, given as adjunctive therapy, at all doses studied, with a higher frequency than placebo were: headache, dizziness, fatigue, nausea, somnolence, diplopia, nasopharyngitis, tremor, nystagmus, vision blurred and vomiting.

Table 4 lists treatment-emergent adverse reactions that occurred in at least 3% of pediatric patients with epilepsy treated with BANZEL in controlled adjunctive studies and were numerically more common in patients treated with BANZEL than placebo.

Preferred Term	BANZEL (N=187) %	Placebo (N=182) %
Somnolence	17	9
Vomiting	17	7
Headache	16	8
Fatigue	9	8
Dizziness	8	6
Nausea	7	3
Influenza	5	4
Nasopharyngitis	5	3
Decreased Appetite	5	2
Rash	4	2
Ataxia	4	1
Diplopia	4	1
Bronchitis	3	2
Sinusitis	3	2
Psychomotor Hyperactivity	3	1
Abdominal Pain Upper	3	2
Aggression	3	2
Ear Infection	3	1
Disturbance in Attention	3	1
Pruritis	3	0

Table 5 lists treatment-emergent adverse reactions that occurred in at least 3% of adult patients with epilepsy treated with BANZEL (up to 3200mg/day) in adjunctive controlled studies and were numerically more common in patients treated with BANZEL than placebo. In these studies, either BANZEL or placebo was added to current AED therapy.

Preferred Term	BANZEL (N=823) %	Placebo (N=376) %
Headache	27	26
Dizziness	19	12
Fatigue	16	10
Nausea	12	9
Somnolence	11	9
Diplopia	9	3
Tremor	6	5
Nystagmus	6	5
Vision Blurred	6	2
Vomiting	5	4
Ataxia	4	0
Abdominal Pain Upper	3	2
Anxiety	3	2
Constipation	3	2
Dyspepsia	3	2
Back Pain	3	1
Gait Disturbance	3	1
Vertigo	3	1

**Discontinuation in Controlled Clinical Studies**

In controlled double-blind adjunctive clinical studies, 9.0% of patients receiving BANZEL as adjunctive therapy and 4.4% receiving placebo discontinued as a result of an adverse reaction. The adverse reactions most commonly leading to discontinuation of BANZEL (>1%) used as adjunctive therapy were generally similar in adults and children.

In pediatric double-blind adjunctive clinical studies, 8.0% of patients receiving BANZEL as adjunctive therapy and 2.2% receiving placebo discontinued as a result of an adverse reaction. The adverse reactions most commonly leading to discontinuation of BANZEL (>1%) used as adjunctive therapy are presented in Table 6.

Preferred Term	BANZEL (N=187) %	Placebo (N=182) %
Convulsion	2	1
Rash	2	1
Fatigue	2	0
Vomiting	1	0

## BANZEL™

(rufinamide)

In adult double-blind adjunctive clinical studies (up to 3200 mg/day), 9.5% of patients receiving BANZEL as adjunctive therapy and 5.9% receiving placebo discontinued as a result of an adverse reaction. The adverse reactions most commonly leading to discontinuation of BANZEL (>1%) used as adjunctive therapy are presented in Table 7.

Table 7: Adverse Reactions Most Commonly Leading to Discontinuation in Double-Blind Adjunctive Trials (up to 3200 mg/day) in Adult Patients		
Preferred Term	BANZEL (N=823)	Placebo (N=376)
	%	%
Dizziness	3	1
Fatigue	2	1
Headache	2	1
Nausea	1	0
Ataxia	1	0

### Other Adverse Events Observed During Clinical Trials:

BANZEL has been administered to 1978 individuals during all epilepsy clinical trials (placebo-controlled and open-label). Adverse events occurring during these studies were recorded by the investigators using terminology of their own choosing. To provide a meaningful estimate of the proportion of patients having adverse events, these events were grouped into standardized categories using the MedDRA dictionary. Adverse events occurring at least three times and considered possibly related to treatment are included in the System Organ Class listings below. Terms not included in the listings are those already included in the tables above, those too general to be informative, those related to procedures, and terms describing events common in the population. Some events occurring fewer than 3 times are also included based on their medical significance. Because the reports include events observed in open label, uncontrolled observations, the role of BANZEL in their causation cannot be reliably determined.

Events are classified by body system and listed in order of decreasing frequency as follows: *frequent adverse events*— those occurring in at least 1/100 patients; *infrequent adverse events*— those occurring in 1/100 to 1/1000 patients; *rare*— those occurring in fewer than 1/1000 patients.

**Blood and Lymphatic System Disorders:** *Frequent:* anemia. *Infrequent:* lymphadenopathy, leukopenia, neutropenia, iron deficiency anemia, thrombocytopenia.

**Cardiac Disorders:** *Infrequent:* bundle branch block right, atrioventricular block first degree

**Metabolic and Nutritional Disorders:** *Frequent:* decreased appetite, increased appetite.

**Renal and Urinary Disorders:** *Frequent:* pollakiuria. *Infrequent:* urinary incontinence, dysuria, hematuria, nephrolithiasis, polyuria, enuresis, nocturia, incontinence.

### DRUG ABUSE AND DEPENDENCE

The abuse and dependence potential of BANZEL has not been evaluated in human studies.

### OVERDOSAGE

Because strategies for the management of overdose are continually evolving, it is advisable to contact a Certified Poison Control Center to determine the latest recommendations for the management of an overdose of any drug.

One overdose of 7200 mg/day BANZEL was reported in an adult during the clinical trials. The overdose was associated with no major signs or symptoms, no medical intervention was required, and the patient continued in the study at the target dose.

**Treatment or Management of Overdose:** There is no specific antidote for overdose with BANZEL. If clinically indicated, elimination of unabsorbed drug should be attempted by induction of emesis or gastric lavage. Usual precautions should be observed to maintain the airway. General supportive care of the patient is indicated including monitoring of vital signs and observation of the clinical status of the patient.

**Hemodialysis:** Standard hemodialysis procedures may result in limited clearance of rufinamide. Although there is no experience to date in treating overdose with hemodialysis, the procedure may be considered when indicated by the patient's clinical state.

### DOSE AND ADMINISTRATION

**Children four years and older with Lennox-Gastaut syndrome:** Treatment should be initiated at a daily dose of approximately 10 mg/kg/day administered in two equally divided doses. The dose should be increased by approximately 10 mg/kg increments every other day to a target dose of 45 mg/kg/day or 3200 mg/day, whichever is less, administered in two equally divided doses. It is not known whether doses lower than the target doses are effective.

**Adults with Lennox-Gastaut syndrome:** Treatment should be initiated at a daily dose of 400–800 mg/day administered in two equally divided doses. The dose should be increased by 400–800 mg/day every 2 days until a maximum daily dose of 3200 mg/day, administered in two equally divided doses is reached. It is not known whether doses lower than 3200 mg are effective.

BANZEL tablets are scored on both sides and can be cut in half for dosing flexibility. Tablets can be administered whole, as half tablets or crushed.

BANZEL should be given with food.

### Patients with Renal Impairment

Renally impaired patients (creatinine clearance less than 30 mL/min) do not require any special dosage change when taking BANZEL.

### Patients Undergoing Hemodialysis

Hemodialysis may reduce exposure to a limited (about 30%) extent. Accordingly, adjusting the BANZEL dose during the dialysis process can be considered.

### Patients with Hepatic Disease

Use of BANZEL in patients with hepatic impairment has not been studied. Therefore, use in patients with severe hepatic impairment is not recommended. Caution should be exercised in treating patients with mild to moderate hepatic impairment.

## BANZEL™

(rufinamide)

### HOW SUPPLIED

BANZEL 200 mg tablets (containing 200 mg rufinamide) are pink in color, film-coated, oblong-shape tablets, with a score on both sides, imprinted with "€ 262" on one side. They are available in bottles of 30 (NDC 62856-582-30).

BANZEL 400 mg tablets (containing 400 mg rufinamide) are pink in color, film-coated, oblong-shape tablets, with a score on both sides, imprinted with "€ 263" on one side. They are available in bottles of 120 (NDC 62856-583-52). Store at 25°C (77°F); excursions permitted to 15° – 30°C (59°F – 86°F). Protect from moisture. Replace cap securely after opening.

### Rx Only

BANZEL™ is a trademark of Novartis Pharma AG, used under license.



Manufactured by Eisai Co., Ltd.  
Marketed by Eisai Inc., Woodcliff Lake, NJ 07677

©2008 Eisai Inc. Printed in U.S.A.

Revised November 2008

### Medication Guide

**BANZEL™ (ban-'zel)**  
[rufinamide]

### BANZEL and Suicidal Thoughts or Actions

Read this Medication Guide before you start taking BANZEL and each time you get a refill. There may be new information. This information does not take the place of talking to your healthcare provider about your medical condition or treatment. This Medication Guide is only about the risk of suicidal thoughts and actions with BANZEL.

### What is the most important information I should know about BANZEL?

- BANZEL may cause suicidal thoughts or actions in a very small number of people, about 1 in 500.**
- Call a healthcare provider right away if you have any of these symptoms, especially if they are new, worse, or worry you:**

- thoughts about suicide or dying
- attempt to commit suicide
- new or worse depression
- new or worse anxiety
- feeling agitated or restless
- panic attacks
- trouble sleeping (insomnia)
- new or worse irritability
- acting aggressive, being angry, or violent
- acting on dangerous impulses
- an extreme increase in activity and talking (mania)
- other unusual changes in behavior or mood

### 3. Do not stop BANZEL without first talking to a healthcare provider.

- Stopping BANZEL suddenly can cause serious problems.
- Suicidal thoughts or actions can be caused by things other than medicines. If you have suicidal thoughts or actions, your healthcare provider may check for other causes.

### 4. How can I watch for early symptoms of suicidal thoughts and actions?

- Pay attention to any changes, especially sudden changes, in mood, behaviors, thoughts, or feelings.
- Keep all follow-up visits with your healthcare provider as scheduled.
- Call your healthcare provider between visits as needed, especially if you are worried about symptoms.

### What else should I know about BANZEL?

- BANZEL has other side effects.** For more information ask your healthcare provider or pharmacist. Tell your healthcare provider if you have any side effect that bothers you.

**Call your doctor for medical advice about side effects. You may report side effects to FDA at 1-800-FDA-1088.**

- BANZEL can interact with other medicines.** Tell your healthcare provider about all the medicines you take, including prescription and non-prescription medicines, vitamins, and herbal supplements. Using BANZEL with certain other medicines can affect each other causing side effects.

Know the medicines you take. Keep a list of them and show it to your healthcare provider and pharmacist each time you get a new medicine. Do not start a new medicine without first talking with your healthcare provider.

Medicines are sometimes prescribed for purposes other than those listed in a Medication Guide. Do not use BANZEL for a condition for which it was not prescribed. Do not give BANZEL to other people, even if they have the same symptoms that you have. It may harm them.

This Medication Guide summarizes the most important information about BANZEL. If you would like more information, talk with your doctor. You can ask your pharmacist or doctor for information about BANZEL that is written for health professionals.

For more information, go to [www.banzel.com](http://www.banzel.com) or call 1-888-274-2378.

Issued November 2008

This Medication Guide has been approved by the U.S. Food and Drug Administration

BANZEL™ is a trademark of Novartis Pharma AG, used under license.



Manufactured by Eisai Co., Ltd.  
Marketed by Eisai Inc., Woodcliff Lake, NJ 07677

©2008 Eisai Inc. Printed in U.S.A. RUF000052